



Studio Theatre

Technical Specifications

Theatre Manager	Kim Scarlata	209.831.6205
Box Office Coordinator	Laura Johnston	209.831.6208
Theatre Operations & Technical Assistant	Matthew Morgan	209.831.6275
Box Office		209.831.6858 209.831.6271 fax



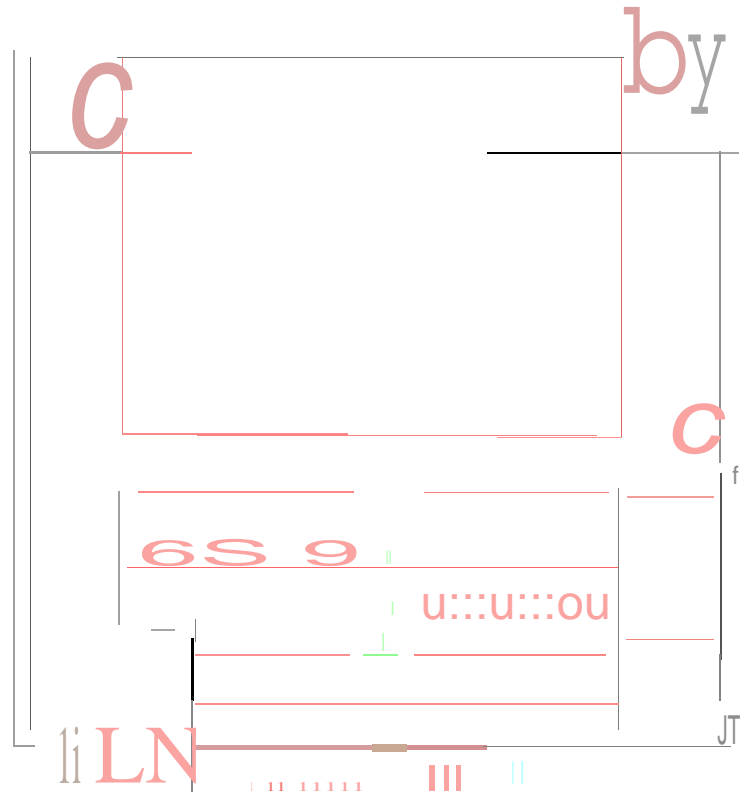
Think Inside the Triangle®

Grand Theatre Center for the Arts
715 Central Avenue
Tracy, CA 95376
www.atthegrand.org

Grand Theatre Center for the Arts
 Studio Theatre

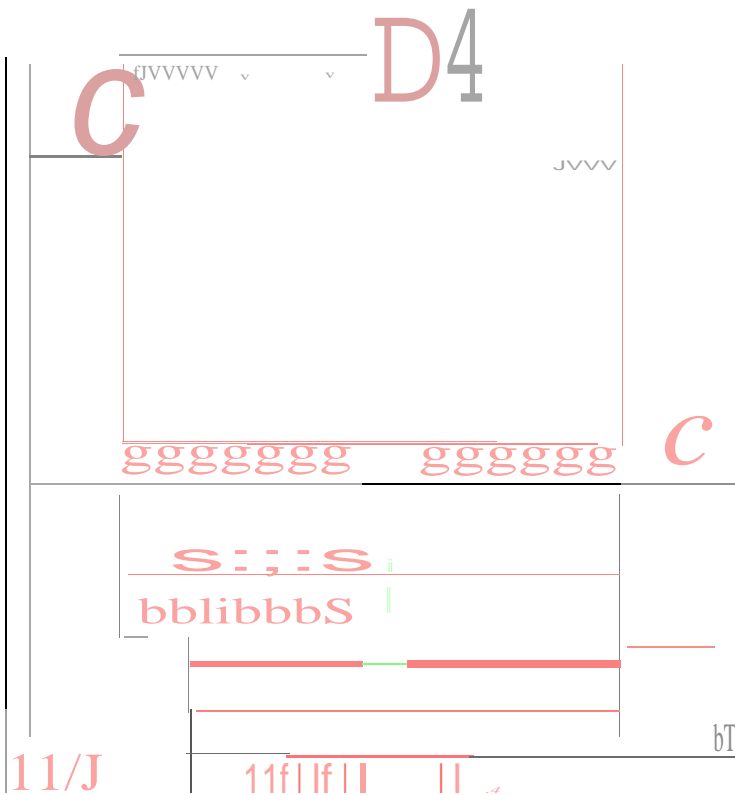
Seating Layout Options

Maximum occupancy 110



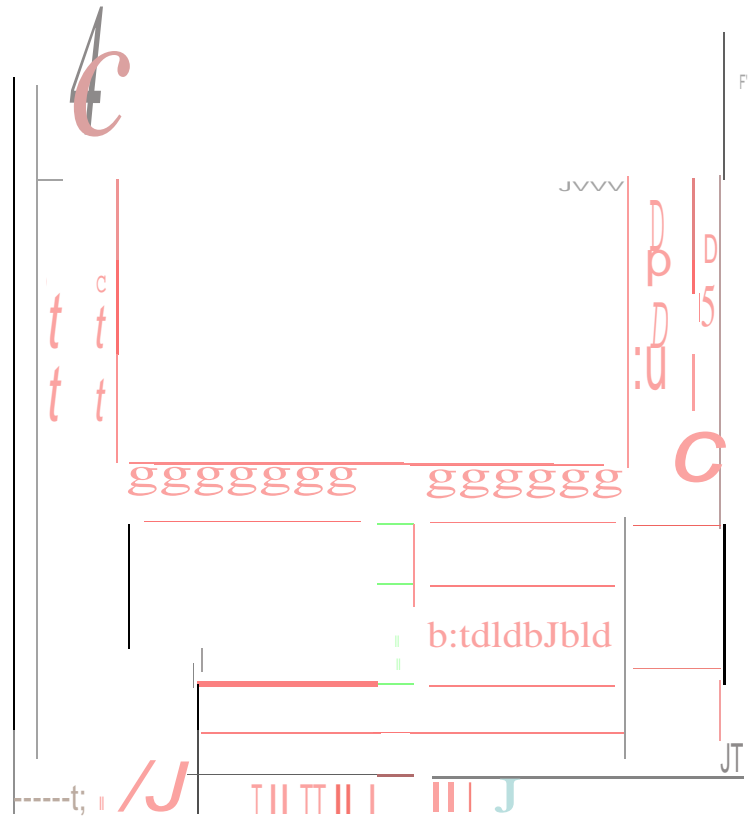
Default Seating

64 Seats Total



Added First Row

77 Seats Total



Full Seating

104 Seats Total

Stage

Stage Width	29' 8"
Stage Depth	22'
Grid Height	18'
Tech Gallery Height	13'

Backstage

Back hall provides crossover. Dressing and Green Rooms accessible via backstage. The backstage area is shared with the ETK Theatre and space may be very tight with both venues active.

The Studio Theatre has a tech gallery or catwalk surrounding the stage on the sides and above the center seating. Lighting and Sound boards are located at the center of the tech gallery. The Stage Manager can be located there or on the 1st floor House Left, or the backstage hall.

Performers' entrance is at 25 West 7th Street. This is the Old Town Hall and Jail which serves as our Green Room.

2 Dressing Rooms 16' x 18' each * When Available*
With 7 positions, 2 sinks, 1 toilet with shower, 1 wardrobe rack, 1 steamer, 1 iron and 1 ironing board in each.

Green Room 21' x 25' * When Available*
Company desk with phone (209.831.6284), small refrigerator, coffee maker, water cooler, couch and chairs, meeting table, and bathroom. Wired internet available. Fax line available.

Storage space is limited in our facility. Please make arrangements with the Theatre Supervisor if you need to store unused or empty road boxes.

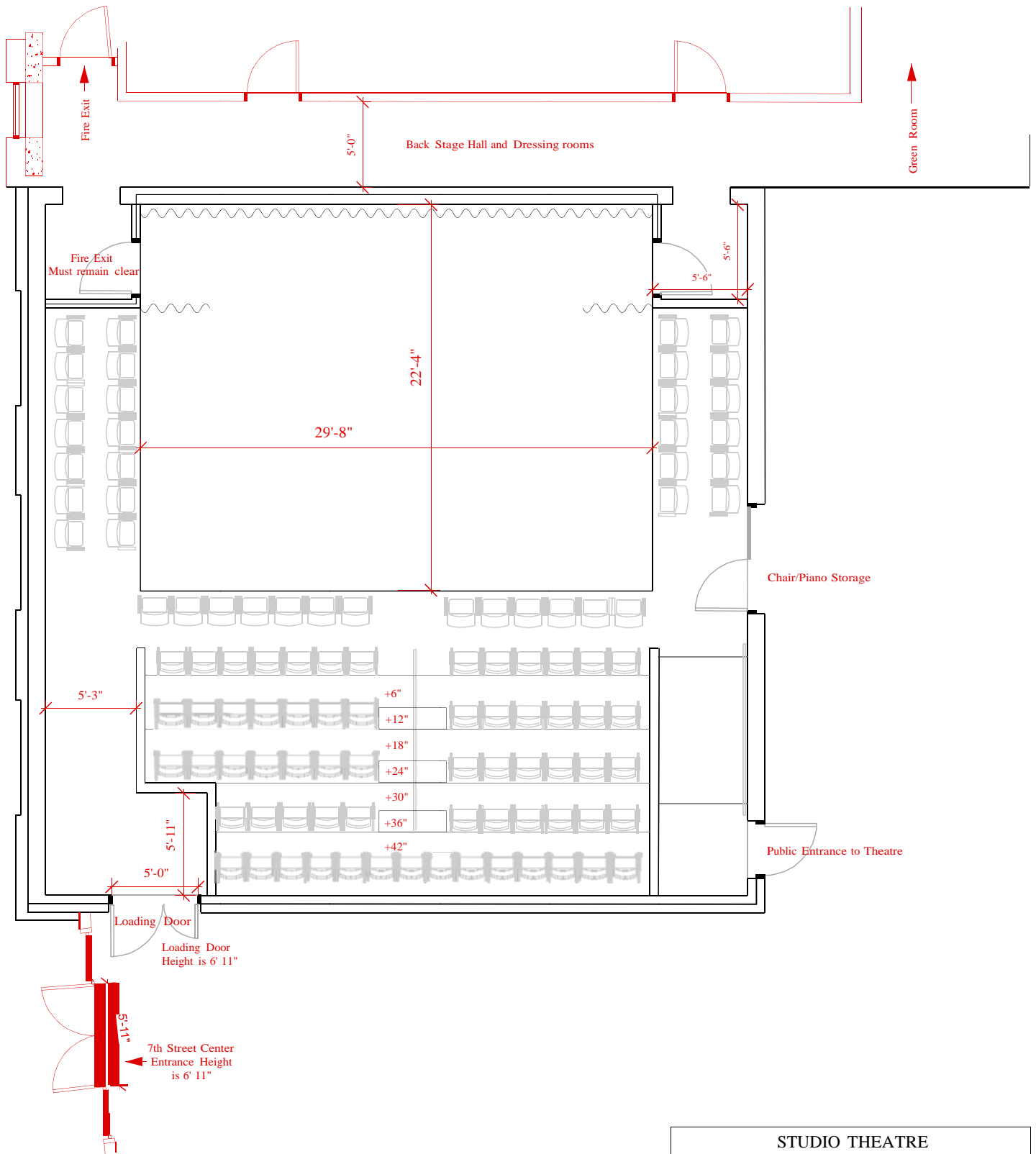
Loading Area


Accessible from West 7th Street off of Central Street.

Use West 7th Street entrance to Grand Theatre Center. Loading doors inside on the left.

Because of hard angles, please consult with Theatre Supervisor on anything bigger than 8' X 4'.

No ramp on site. If required, please notify in advance.



STUDIO THEATRE			
	SHOW		
	TITLE Theatre Dimensions		
	DESIGNED BY	REV	
	SCALE 1/8" = 1'		DATE

Theatrical Lighting

Strand C21 Dimming. 55 2.4kW dimmers. Dimmer per circuit.

Wireless Remote Focus Unit

Lighting control console: ETC Express 24/48

Stage Electrical Circuit Schedule

36 Circuits in Grid	4 Circuits Up Stage Left Floor
4 Circuits Stage Left Tech Gallery	4 Circuits Up Stage Right Floor
4 Circuits Stage Right Tech Gallery	3 Circuits Center Tech Gallery

Lighting Inventory

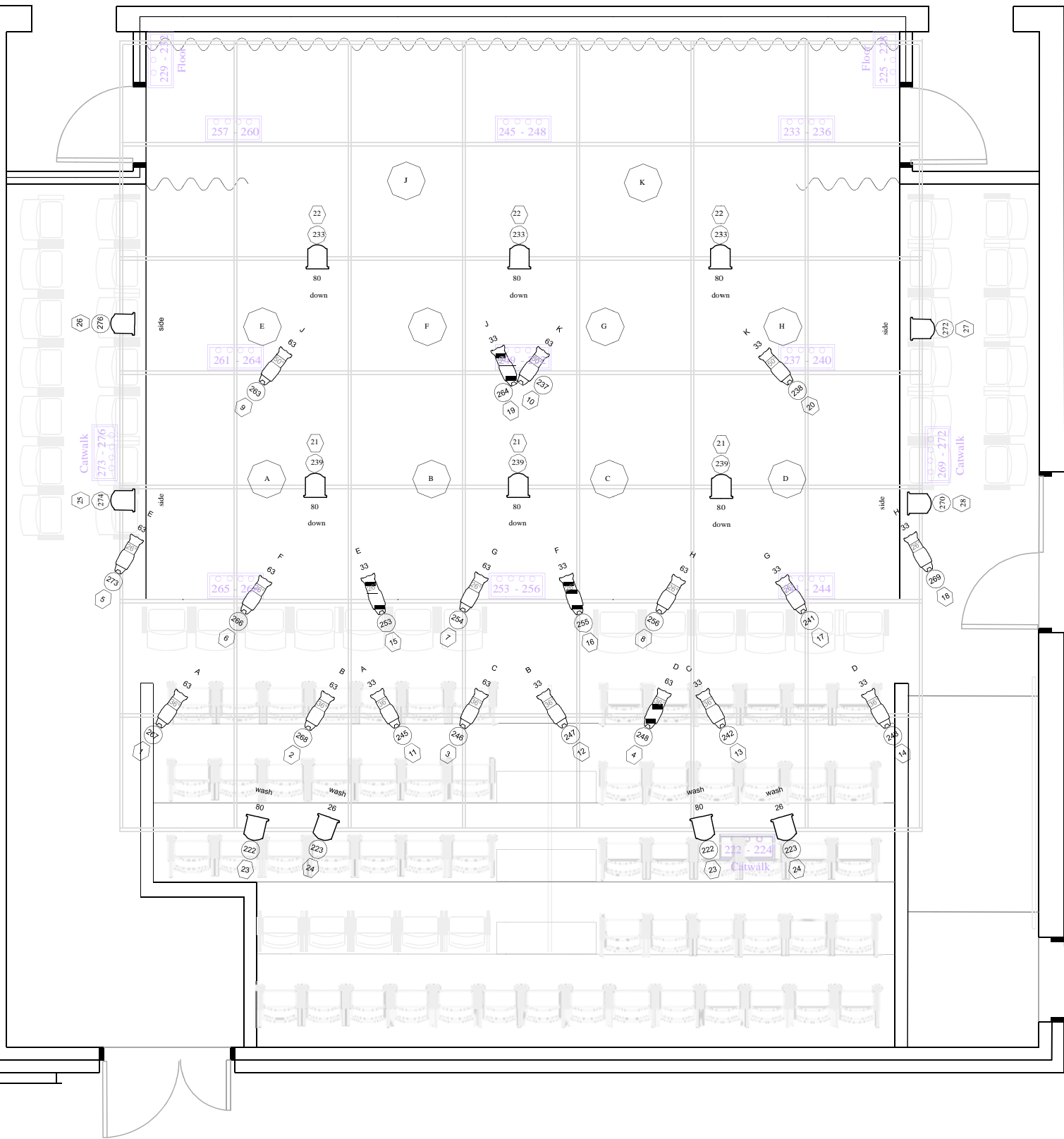
8 Etc Source Four Jr. Ellipsoidal – 26 Degree	12 “M” size pattern holders
12 Etc Source Four Jr. Ellipsoidal – 36 Degree	3 Donuts for S4 Jr.
4 Etc Source Four Jr. Ellipsoidal – 50 Degree	2 Drop in Iris
18 Strand 6” Fresnels	3 Tophat

Cable



(#) = Number used in On Stage Rep Plot


6 (4) Twofers	10 (6) Stage Pin Cable – 10’
10 (5) Stage Pin Cable – 5’	6 (4) Stage Pin Cable – 25’

* Additional inventory may be available from ETK Theatre. Please check with Theatre Supervisor.



 = Dimmer Circuit Box (does not interfere with hanging positions)

 = Source Four Jr. @ 26.36 or 50 deg.  = 6" Fresnel

STUDIO THEATRE				
	SHOW			
	TITLE	Repertory Light Plot		
	DESIGNED BY	J. Haskett	REV	B
	SCALE	3/16" = 1'	DATE	
		DRAWING NO.		

Audio System

2 EAW JFX-290 Main Speakers. House Left and Right rigged from the Grid.

- Powered by 5 CROWN CTs 3000 Amplifiers

1 EAW SB-250 Sub rigged above Grid.

- Powered by 1 CROWN CTs 4200 (4ch)

Midas Venice 160 16 Channel Console

- 12 mono microphone/line inputs, 4 stereo inputs
- 3 band parametric EQ on mic channels
- 2 Auxiliary sends
- 2 Monitor sends
- 2 Effects sends

BSS Soundweb (sw9088iis) DSP control system.

- L and R input routing to main speakers and sub.
- Crossovers and EQ for main speakers.
- Assistive Listening processing.
- BOH monitor system.

6 Aux Amplifier Channels

- 1-2 @ 600W (4 or 8ohm)
- 3-6 @ 260W(4ohm) 180W(8ohm)
- Inputs at Booth patch bay
- 2 outputs each patch to 2 ch. Stage Left, 2 ch. Stage Right, and 2 ch. Up Stage Center, 4ch in Grid, 2ch Tech Gallery Left, 2 ch. Tech Gallery Right, and 2ch. Tech Gallery Center.

8 JBL JRX112M Monitor Wedges * When Available*

- 250W program

2 EAW JFX-290 Portable, with yolk and clamps

1 Tascam CD-X1500 Dual CD Player

Cable

4	XLR – 10'	4	Loudspeaker (Speakon) – 25'
8	XLR – 25'	4	XLR – 50'

Microphones

6 Generic vocal

* Additional Microphones may be available from ETK stock. Please check with Theatre Supervisor.

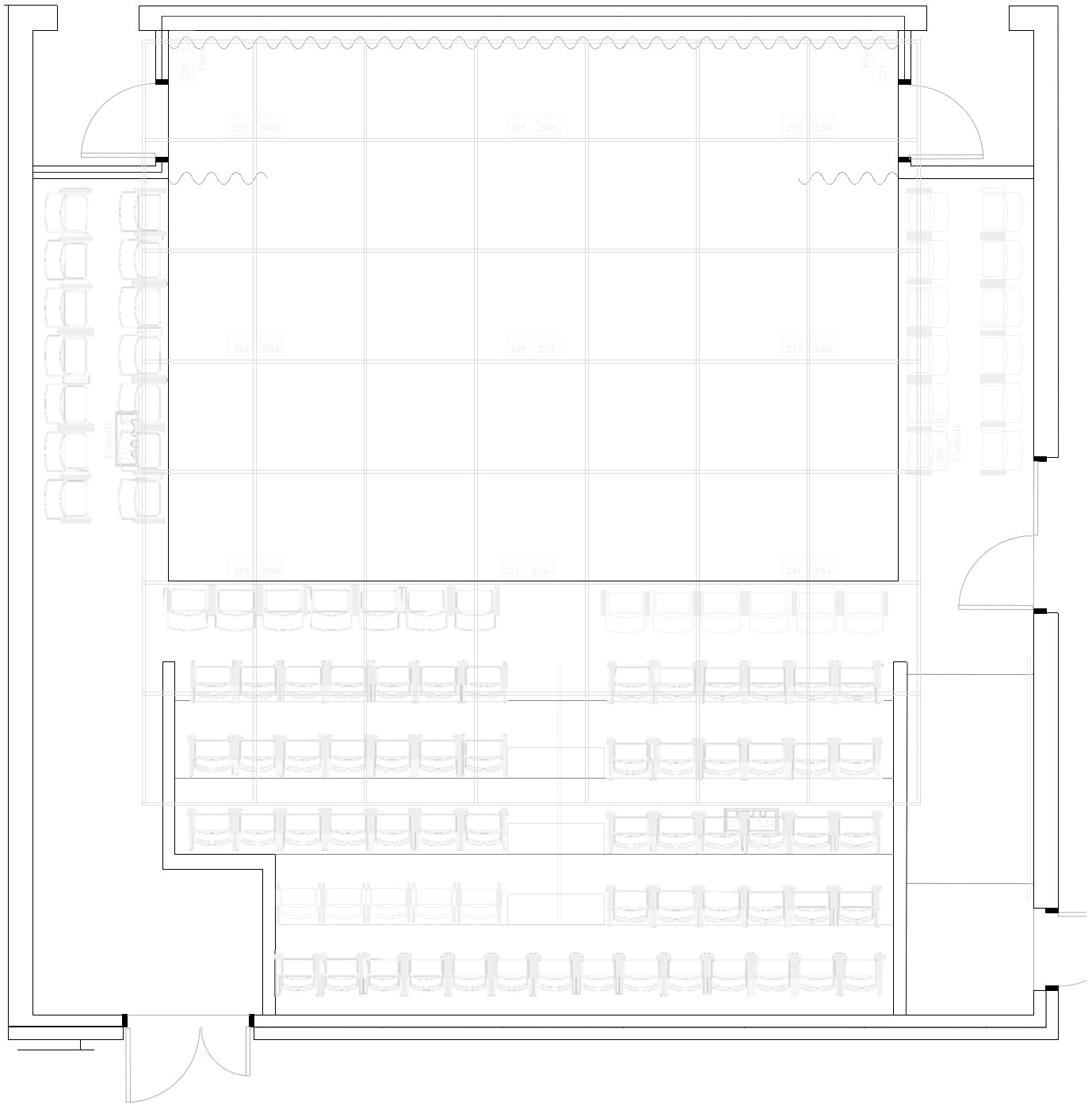
Miscellaneous

5 Microphone Boom Stands

* Additional Stands, DIs, etc. may be available from ETK stock. Please check with Theatre Supervisor.

Communications

6	1 channel belt pack	7	Standard single muff headset
1	2 channel stage management unit (portable)	1	8" TV monitors (portable)
1	Reference camera (FOH)		



 = Dimmer Circuit Box (does not interfere with hanging positions)

STUDIO THEATRE			
<small>NO. _____</small>			
<small>TITLE _____</small>			
<small>DESIGNED BY _____</small>			<small>REV. _____</small>
<small>SCALE 1/4" = 1'</small>		<small>DATE _____</small>	<small>DRAWING NO. _____</small>



